



Laboratorio para Experimentación en Espacio y Microgravedad (LEEM)



*All You CAN Fly
from 8 to 11 of April 2010*

Corral de Ayllón Information Report



Information about Corral de Ayllón and Segovia

1. Useful information and brief history

Brief history of Corral de Ayllón¹

Corral de Ayllón is a town of 85 habitants, called corraleños/as in the Northeast of the province of Segovia, 20 miles to Riaza and 9 to Ayllón.

In this small town can find the largest airfield in Europe and second extension internationally, it is the private airfield of "La Nava", dedicated exclusively to the private flight and especially gliding. He has over two million square meters. It was built during the Spanish Civil War on the side of nationals, supported by the German Air Force, sought an alternative basis for the operation of the Legion.

Brief history of Segovia

The province of Segovia is a province belonging to the Spanish region of Castilla y Leon, north of the central plateau that divides the Iberian Peninsula.

Its capital is the namesake city of Segovia. It has an area of 6796 km², being the province of smaller extension of Castile and Leon. According to estimates from INE, had 164,854 inhabitants on 1 January 2009.

Climate

The climate is continental Mediterranean, with long winters, dry and cold, and summers are hot but short.

Gastronomy

The province of Segovia, chiefly remarkable for its roast suckling lamb both of Segovia. Other typical dishes are the sausage Cantimpalos, the beans from La Granja, the garlic soup, and for dessert the famous punch Segovia. As for drinks, in the province of Segovia, are municipalities belonging to two Appellations of Origin: Rueda Designation of Origin and Designation of Origin Ribera del Duero, also has the Valtiendas quality wine.

¹ Fuente: <http://en.wikipedia.org/>



2. How to get from Madrid?

→ By car:

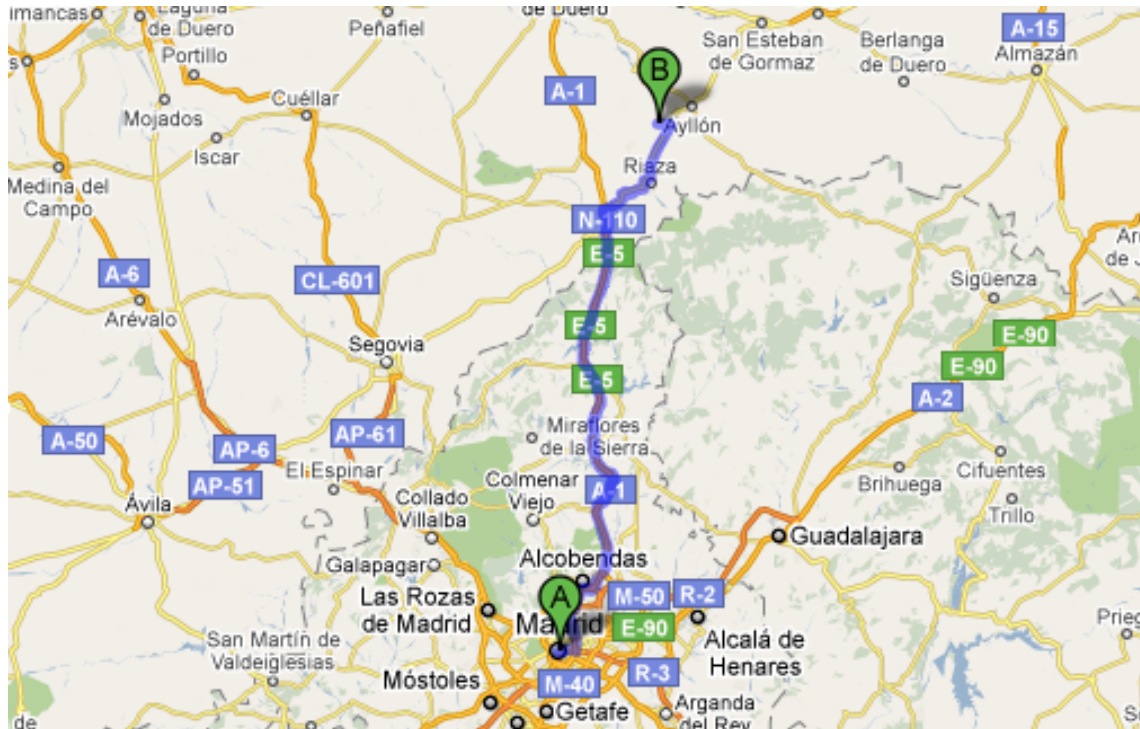
Follow signs to **M-30/M-11/A-1/Burgos/Calle Arturo Soria/Plaza Castilla.**

Follow signs to **M-30/Plaza Castellana/A-1/Burgos/M-11** merge onto **Street 30/M-30**

Continue on **A-1.** (signs for **A-1/Alcobendas/Burgos**).

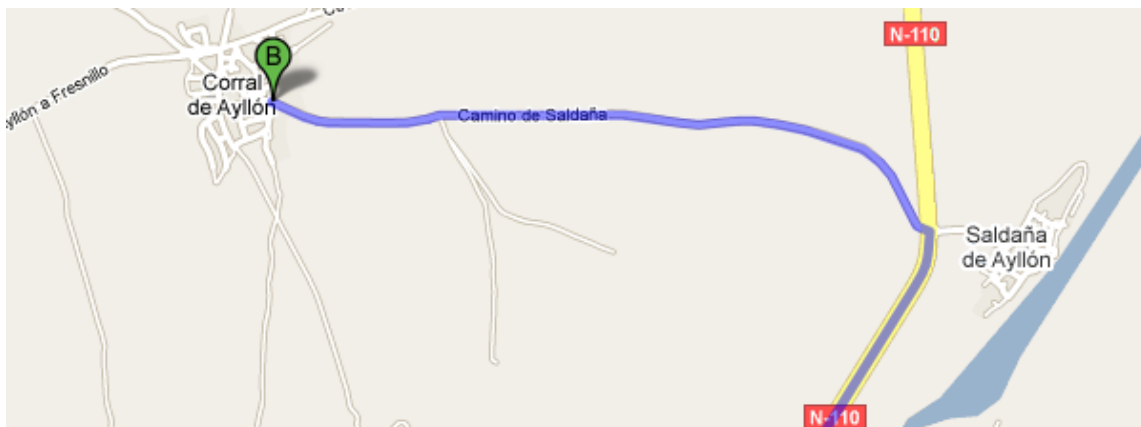
Take exit **103** to **N-110**, direction **Cerezo de Arriba / Riaza / Soria.**

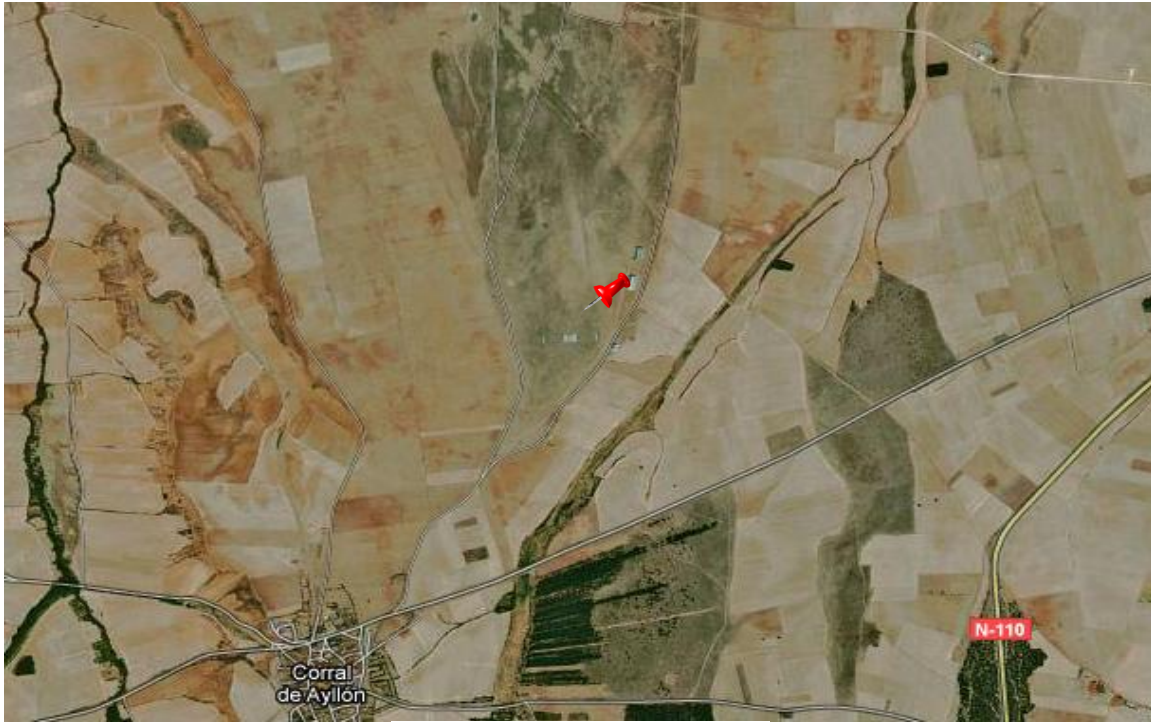
Follow signs to **N-110/Riaza/Soria** merge onto **N-110.**



Turn left onto **Camino de Saldaña.**

Continue by **Camino de Saldaña.**





Corral de Ayllón Aerodrome